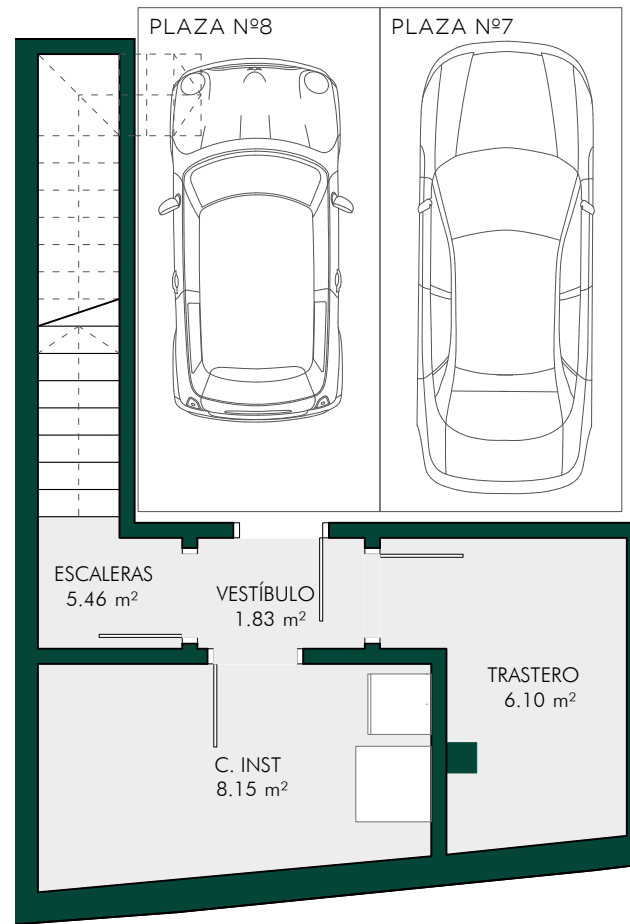
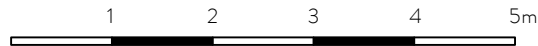


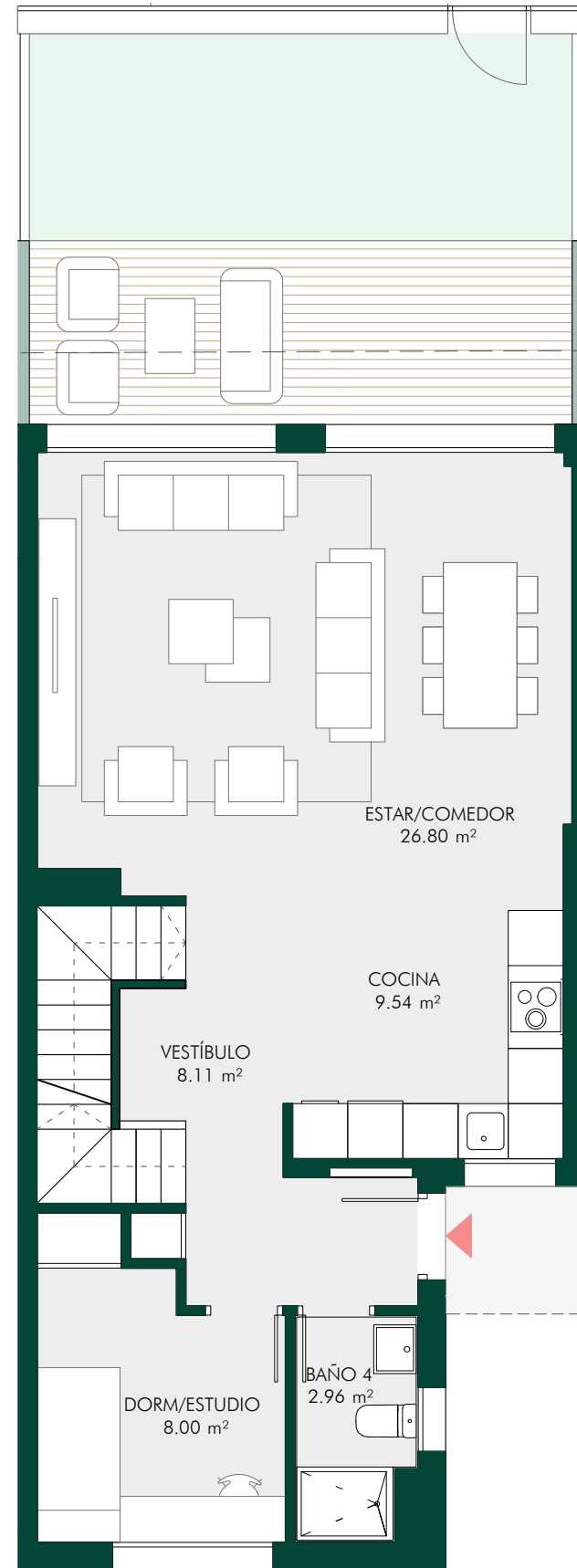
BLOQUE 01
VIVIENDA 03

Superficies aproximadas

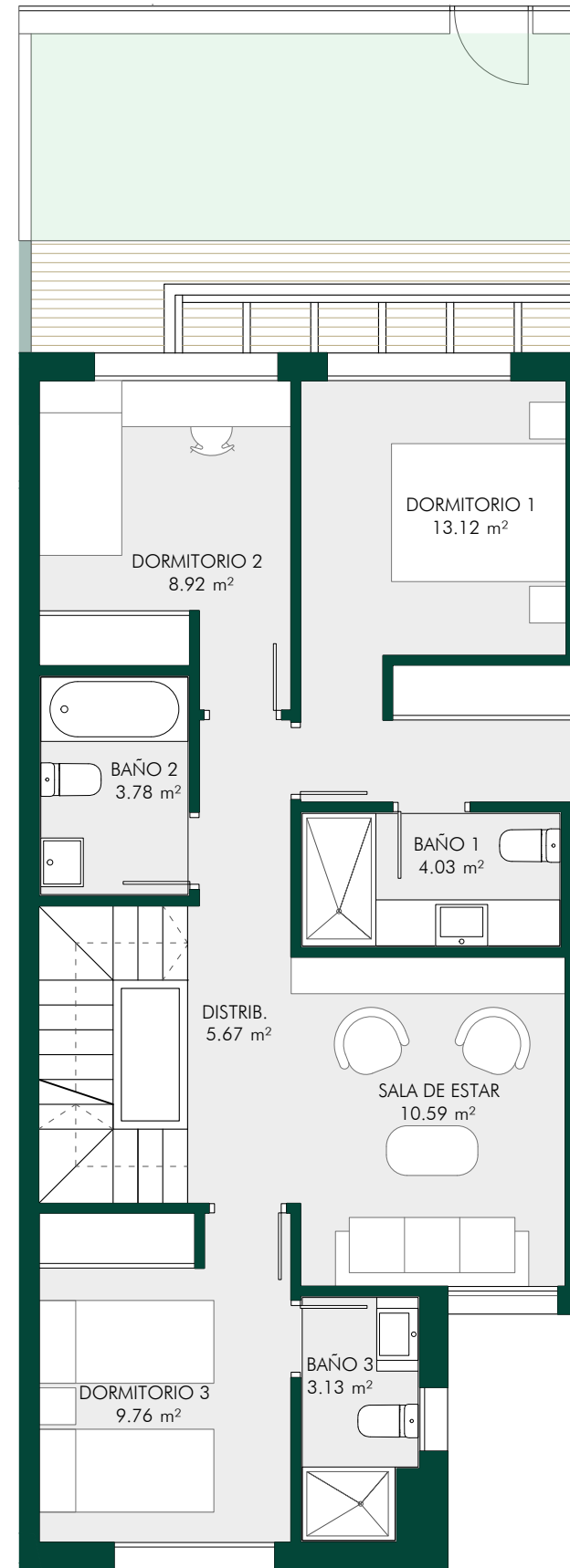
Sup. construida vivienda.....180,90 m²
 Sup. construida con pp ZZCC.....192,47 m²
 Sup. útil ext. privativa - PB.....25,08 m²
 Sup. útil ext. privativa - Solarium.....59,58 m²



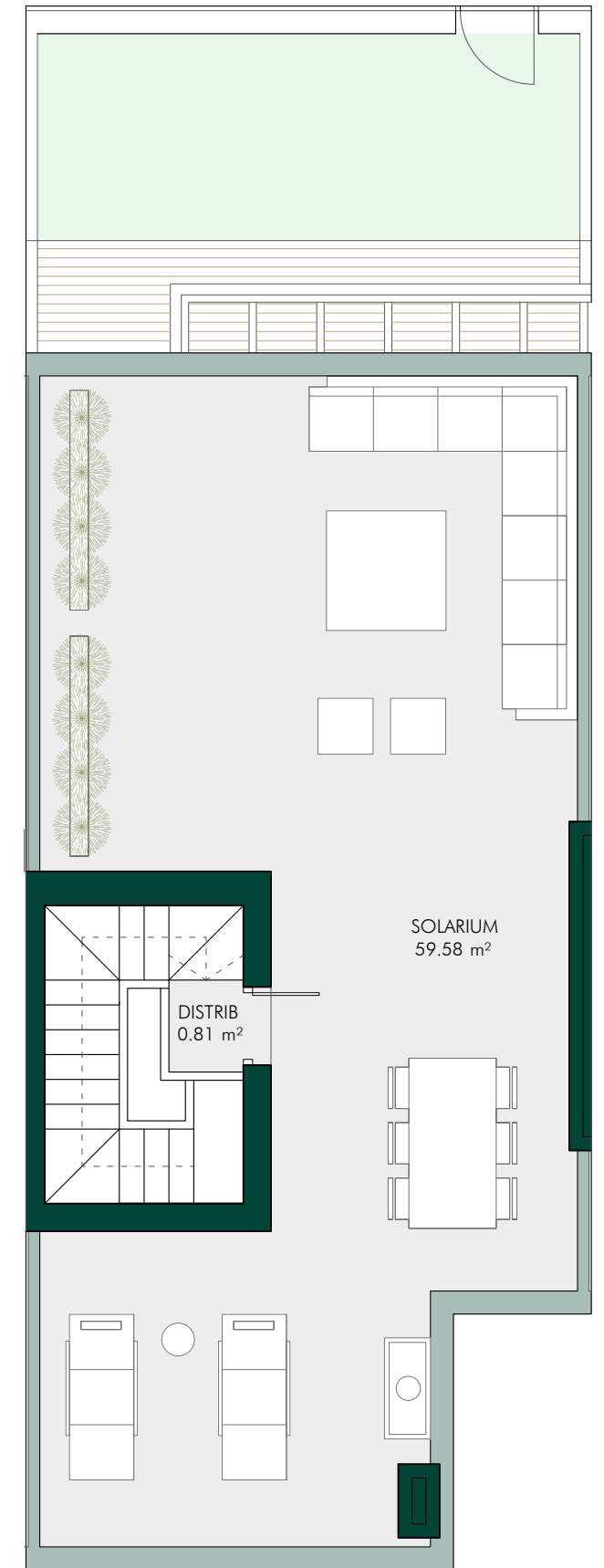
PLANTA SÓTANO
*Incluye plaza de garaje número 09



PLANTA BAJA



PLANTA PRIMERA



PLANTA CUBIERTA

